



Old Church Court, Weaste Road, Salford  
£105,000

**Ascend**  
Built on higher standards

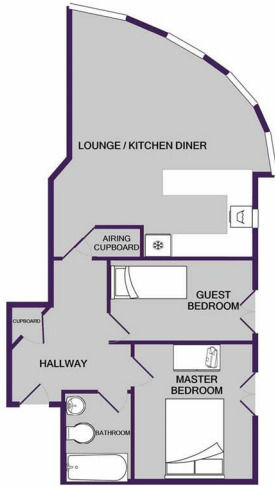
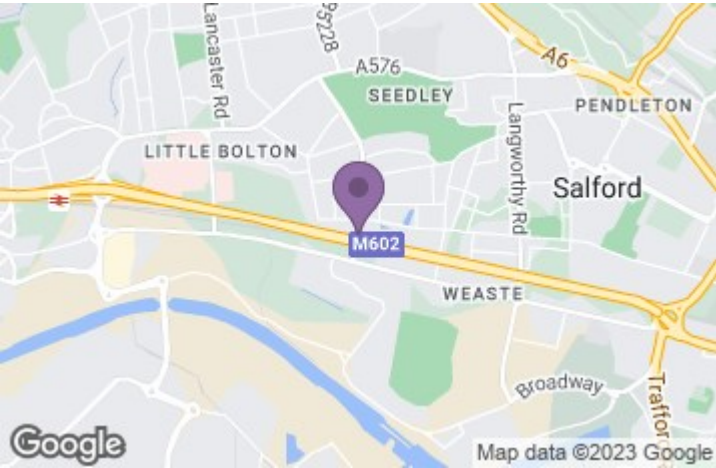
Entrance Hallway  
Front entrance door. Built in storage cupboard, wood effect flooring, wall mounted electric heater. Doors to:

Lounge / Kitchen / Diner  
23'7" maximum x 12'6" maximum (7.19m maximum x 3.81m maximum)  
Kitchen area with wall mounted and base level units, work top surfaces over incorporating a one and half bowl stainless steel sink and drainer unit. Integrated oven and grill with a four ring induction hob and extractor with lighting over. Plumbing and space for an automatic washing machine, space for a fridge freezer. Tiled effect flooring.

Master Bedroom  
10'6" x 9'10" (3.20m x 3.00m)  
Side aspect double glazed door opening to the Juliet balcony. Wall mounted electric heater.

Bedroom Two  
10'11" x 6'2" (3.33m x 1.88m)  
Side aspect double glazed door opening to the Juliet balcony. Wall mounted electric heater.

Bathroom  
Furnished with a three piece suite comprising: Panelled bath, pedestal wash hand basin and a low level WC. Part tiled walls.



Whilst every attempt has been made to ensure the accuracy of the floor plan contained here, measurements of doors, windows, rooms and any other items are approximate and no responsibility is taken for any error, omission, or mis-statement. This plan is for illustrative purposes only and should be used as such by any prospective purchaser. The services, systems and appliances shown have not been tested and no guarantee as to their operability or efficiency can be given.  
Made with Metropex 05/02

